



CADWorx® P&ID Professional

Easy Creation of Intelligent Process Diagrams

Capabilities:

- Quick and Intuitive P&ID Creation
- Large, User-modifiable Symbol Library
- Specification-driven P&IDs
- Bi-directional Project Database
- Component Link to Project Documents
- P&ID/Model Synchronization
- Legacy Drawing Conversion
- P&ID Project Publishing
- Automatic Instrument Loop Diagrams
- CADWorx Internet Publisher

CADWorx® P&ID Professional unlocks the power of P&IDs by making diagrams, and the information locked within them, available to all stakeholders.

Intelligent Process Diagrams

CADWorx P&ID Professional allows for the quick and easy creation of fully intelligent P&IDs and does so without the need to change the current look and feel of existing drawings, symbols or corporate standards.

Specification-Driven P&IDs

CADWorx P&ID Professional optionally allows P&ID components to be placed using piping specifications, thereby improving accuracy and enabling component checks against the plant model.

Industry-Standard Symbols

CADWorx P&ID Professional comes with an extensive symbol library. A programming-free interface enables complete access to existing corporate symbols and assemblies, giving them full CADWorx functionality and intelligence.

Bi-Directional Project Databases

CADWorx P&ID Professional permits the creation of user-defined project databases with no database knowledge required. Project databases are bi-directionally linked to project drawings, ensuring both database and drawings are continually in sync.

Project Document Links

CADWorx P&ID Professional enables the linking of any amount of information or number of documents to P&ID components and stores this information in project databases for further processing.

P&ID Project Publishing

CADWorx Internet Publisher allows P&IDs to be effortlessly published so that they can be viewed using Windows Internet Explorer. Published projects also allow each component's database information, and any documents linked to them, to be accessed from within the browser. Published projects can be hosted on the Internet, on an intranet or locally. P&ID and plant model synchronization and intelligent component checking between the CADWorx P&ID Professional and CADWorx Plant Professional models ensures full synchronization between P&ID and model components.

Legacy Drawing Conversation

CADWorx P&ID Professional includes powerful routines that make it easy to link legacy P&IDs and their components to project databases. This allows these drawings to be used exactly as if they were originally created using CADWorx.

Automatic Instrument Loop Diagrams

CADWorx P&ID Professional uses user-defined templates for the automatic creation of instrument loop diagrams.

Intelligent Datasheet Capabilities

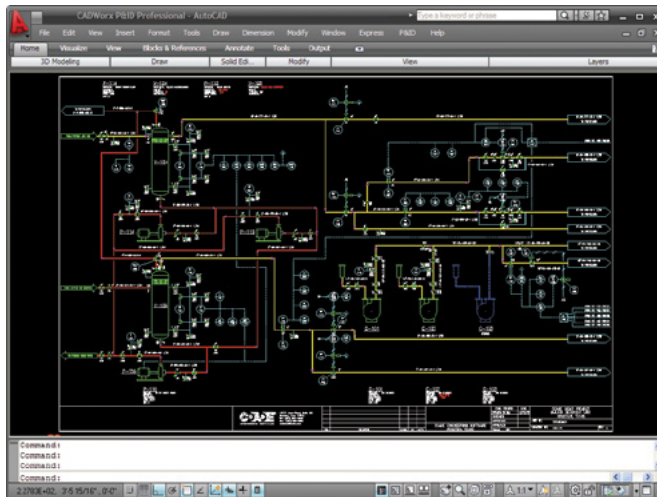
CADWorx Instrument Datasheet and CADWorx Equipment Datasheet modules are included. These modules can be used standalone or may leverage information contained in the CADWorx P&ID Professional project databases.

Technical Specifications

- AutoCAD®-compatible
- BricsCAD®-compatible (Recommended)

Application Areas

Process and Plant Design, Piping, Equipment, Petrochemical, Chemical, Power, Offshore, Food, Beverage, Brewing, Pharmaceutical, Water Treatment, Building Services, Shipbuilding and Architectural.



CADWorx P&ID Professional is the most powerful and easiest to use tool for piping and instrument diagramming.

About Hexagon

Hexagon is the global leader in digital reality solutions, combining sensor, software and autonomous technologies. We are putting data to work to boost efficiency, productivity, quality and safety across industrial, manufacturing, infrastructure, public sector, and mobility applications.

[Hexagon's Asset Lifecycle Intelligence division](#) helps clients design, construct, and operate more profitable, safe, and sustainable industrial facilities. We empower customers to unlock data, accelerate industrial project modernization and digital maturity, increase productivity, and move the sustainability needle.

Our technologies help produce actionable insights that enable better decision-making and intelligence across the asset lifecycle of industrial projects, leading to improvements in safety, quality, efficiency, and productivity, which contribute to Economic and Environmental Sustainability.

Hexagon (Nasdaq Stockholm: HEXA B) has approximately 24,000 employees in 50 countries and net sales of approximately 5.5bn USD. Learn more at [hexagon.com](https://www.hexagon.com) and follow us [@HexagonAB](https://twitter.com/HexagonAB).