

# iConstruct™ PRO

BIM software for Autodesk Navisworks®



iConstruct PRO is a building information modeling (BIM) software for Autodesk Navisworks®, suitable for a large range of industries worldwide. It uses advanced features to improve project performance, and drive collaboration and efficiency across the project lifecycle by ensuring a high-quality conditioned model.

## About iConstruct

iConstruct is the award-winning software that saves up to 200 hours per month for BIM/VDC Coordinators and other engineering professionals in Energy & Resources, AEC and Infrastructure industries.

## iConstruct PRO

A complete bundle of plug-ins and add-ons to manage and maintain projects from concept to completion and beyond.

### iConstruct Features

Append Data	Data Links	Laser Point Creator	ReConstruct
Audit	Dimension Tool	Macro Configuration	Revit Client
BIMflow	Dynamic Labeler	Math Calculations	Room View Creator
Center of Gravity	Explode Tool	Model Compare	Select Similar
Clash	Export Data	Model Compiler	Smart BCF Exchange
Clash Manager	Find and Replace	Open File	Smart DWG Exporter
Clash Reports	Infobin	Photobin	Smart IFC Exporter
Color Code	Integrator	QR Code Reader	View Report
Create QA View	iView Exporter	Quick Viewpoint	Zone Tools

# Building Intelligence through iConstruct BIM Solutions

iConstruct's powerful and advanced technology is constantly evolving to deliver a more enhanced BIM. Utilizing the collaboration and review technology of Autodesk Navisworks, iConstruct allows users to configure and manage a range of information from various models (plus additional data) into a manageable, multi-user format.

**“For all those who are not satisfied with integrated future promises and need working solutions today, solutions that can bring order and structure to your projects, iConstruct is there to help you. The combination of development skills, industry insight and agility the iConstruct team has, makes implementation easy no matter how complex your challenge is: resolving thousands of clashes, or structuring metadata on drawingless design and construction projects is possible.”**

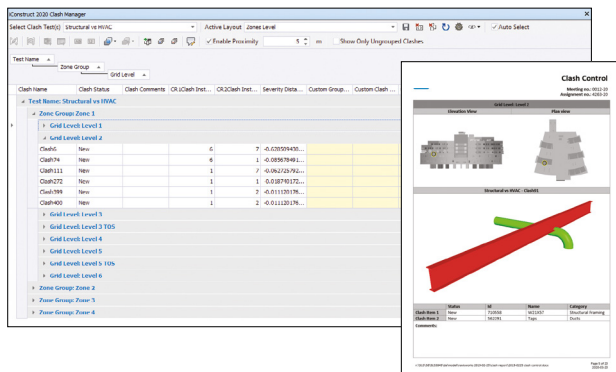
Marius Jablonskis, Technology Manager, Norconsult

## Smart and Efficient Clash Management

Improve the efficiency of clash coordination with iConstruct Clash features by quickly grouping and reviewing clashes, as well as creating viewpoints with one simple click.

### Group

Clash Manager and Group features help user to save valuable time by grouping clashes within projects and quickly prepare models for coordination. Users can use pre-set templates or apply their own grouping rules to clean up clash results data into more manageable tasks. Clash Manager features various options and unique features that allow users to manage duplicate clashes, prioritize clash items to group, offer Zone Grouping and many more.



### Review

This simple tool will save your team countless hours in clash management by allowing them to modify clash properties of the whole group instantly. Changing Status, assigning to or adding comments was never as easy as it is with the review tool.

### Viewpoints

Creating viewpoints has never been so easy. Select your viewpoints and place them in a user-defined folder structure with one click.

### Clash Report

By using advanced report designer functionality, you can create your custom Clash Reports to suit virtually any project stakeholder requirement, everything from executive dashboard reports to detailed lists with clashing elements properties and visual location markers.



## Model Coordination and Data Management

Enhance model coordination and data management with various tools. All these tools work together in the creation of a consistent and serviceable model.

### Reconstruct

A powerful tool that allows users to reorganize and group a model's hierarchy and optimize the model's selection tree for different stages. It is also possible to export cropped models based on section planes or cuboid zones to make files portable.

### Integrator

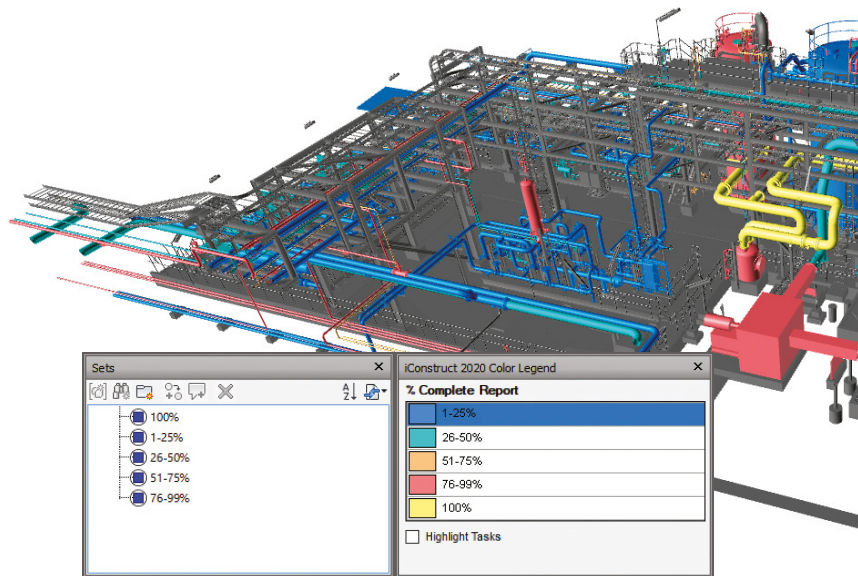
Integrator allows users to create their own custom data tabs within Navisworks by taking data from one or more read-only data tabs and combining them into one. The ability to parse Excel formulas in relation to Item properties has quickly become one of iConstruct PRO users' favorite tools.

### Data Links

Data Links is a powerful tool that provides the ability to bring in related information from external data sources and be displayed within the Navisworks model.

### Export Data

Export Data feature allows users to export customized reports from data within your Navisworks models in various formats including Excel, MS access and PDF.

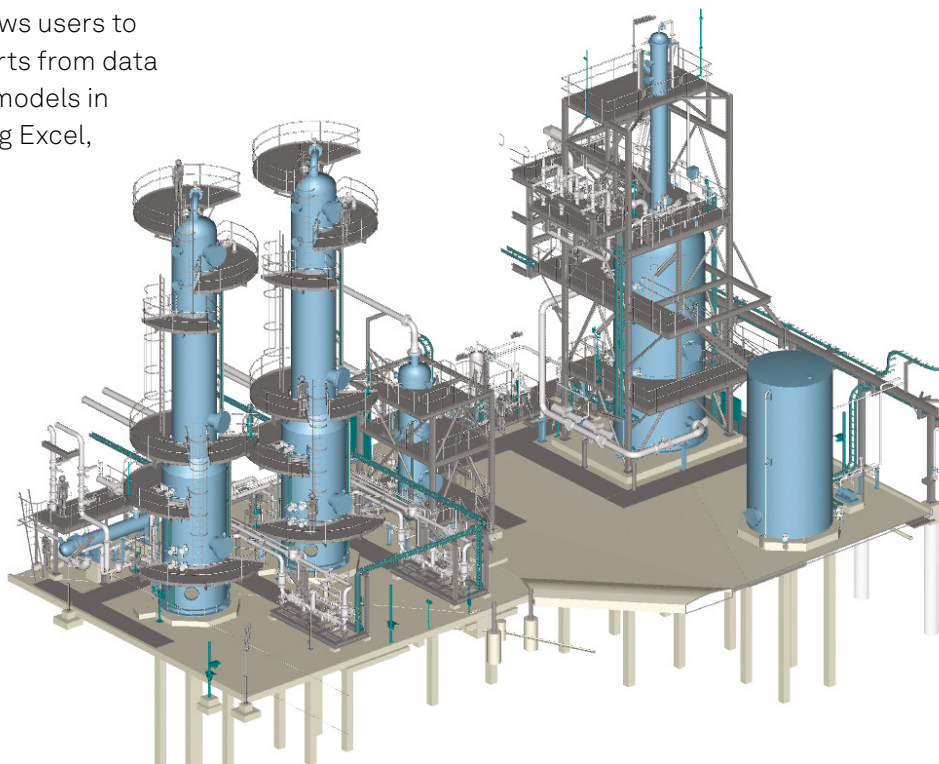


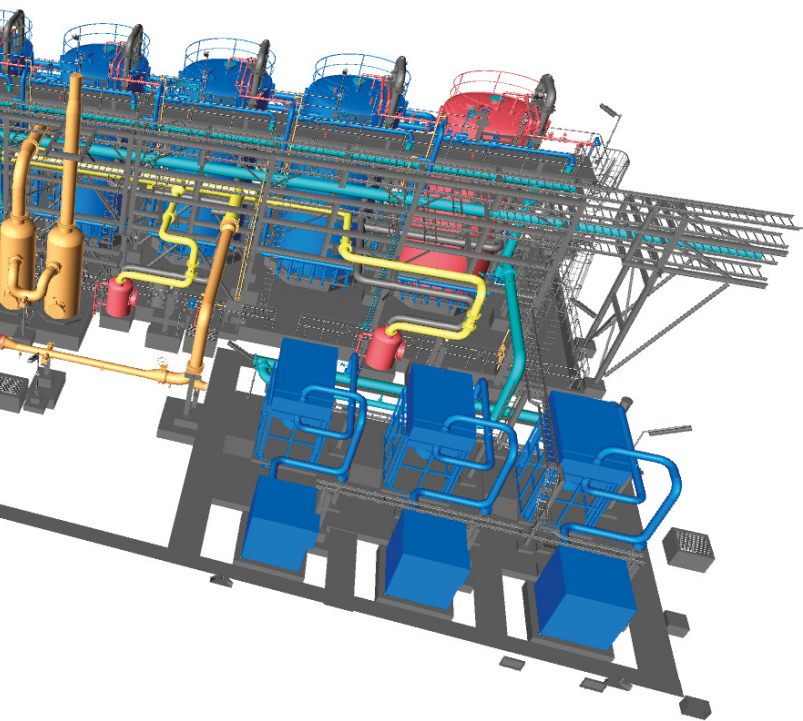
## Task Automation

Automate and schedule frequently used iConstruct and Navisworks routines, multi-step or repetitive tasks using BIMflow. Save time, money and resources.

### BIMflow

BIMflow application maximizes productivity for all engineering projects and streamlines processes. Users can design their own workflows and put their ideas into practice. The workflows created in BIMflow can include any of iConstruct modules as well as Navisworks own features. Once the BIMflow is designed and run, it follows all the commands and features one by one and creates the federated model in an unattended mode.





## Advanced Exporting Interoperability

The iConstruct interoperability tools allow multiple software information systems to seamlessly exchange data. iConstruct provides several tools to export federated Navisworks BIM models in different formats like IFC, DWG or BCF. The conversion of BIM models to these file formats has never been easier, and iConstruct has continued to improve their exporters to work seamlessly.

## Visualization

Generate visualized representations of external and model data by creating automatic viewpoints, applying color overrides and utilizing other visualization tools.

## Audit

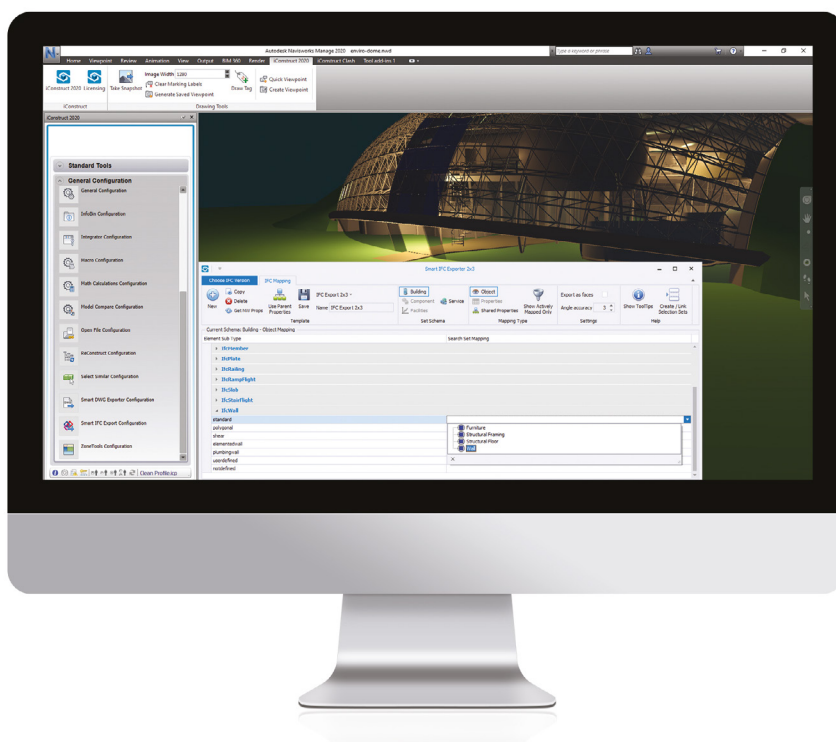
Audit is a very powerful tool to quickly create viewpoints and selection sets based on model properties and/or predetermined search criteria. The Audit feature allows the creation of customized colored viewpoints of any component, spool, module or assembly.

## Color Code

The Color Code tool, will read a variety of external data sources and color your model on predefined rules, including SQL queries. Color Code offers automatic generation of selection sets which makes reporting even easier.

## View Report

The powerful report designer engine allows you to combine model viewpoints with selected data in lists, charts and graphs to make material estimating and take-off (MTO) in various formats quicker and easier.



**“I couldn’t imagine running another project especially something as a large infrastructure project without using iConstruct.”**

**Belinda Thompson,  
BIM Lead, GHD Western  
Australia**

**“ Before we started using iConstruct, our data was located across different silos, and we couldn’t efficiently link up the required information. iConstruct helped us to bring all our data together and contain it within the model, which allowed us to use it as a driver for generating reportable data. We brought data from various sources and used the model as our source of data for reporting. These changes were significant for us.”**

Ciaran McCreary, Life Science and Technology - BIM Manager, Mercury

**“ The reduced time in creating reports allowed us to focus more heavily on our core role of coordinating the project and getting it to a point where it can be constructed.”**

Nathan Trevaskis, Director, Bimfire

## About Hexagon

Hexagon is the global leader in digital reality solutions, combining sensor, software and autonomous technologies. We are putting data to work to boost efficiency, productivity, quality and safety across industrial, manufacturing, infrastructure, public sector, and mobility applications.

Our technologies are shaping production and people-related ecosystems to become increasingly connected and autonomous – ensuring a scalable, sustainable future.

[Hexagon’s Asset Lifecycle Intelligence division](#) helps clients design, construct, and operate more profitable, safe, and sustainable industrial facilities. We empower customers to unlock data, accelerate industrial project modernization and digital maturity, increase productivity, and move the sustainability needle.

Our technologies help produce actionable insights that enable better decision-making and intelligence across the asset lifecycle of industrial projects, leading to improvements in safety, quality, efficiency, and productivity, which contribute to Economic and Environmental Sustainability.

Hexagon (Nasdaq Stockholm: HEXA B) has approximately 24,000 employees in 50 countries and net sales of approximately 5.5bn USD. Learn more at [hexagon.com](https://www.hexagon.com) and follow us [@HexagonAB](https://twitter.com/HexagonAB).